



EVELINE MAX 22 kW MANUAL

EV Expert Portable charger 22kW
(for the European Union including Norway)



USER MANUAL

Designed,
developed and made
in Czech Republic 

CONTENTS

CONTENTS	2
IMPORTANT SAFETY INSTRUCTIONS	3
Charger components	5
EVELINE MAX CHARGER SETTING	6
Charging current setting	6
CHARGER CONNECTION	7
END OF CHARGING AND DISCONNECTING THE CHARGER	7
STATUS SIGNALING	7
TECHNICAL SPECIFICATIONS	9
EU DECLARATION OF CONFORMITY	10
WARRANTY CONDITIONS	11

IMPORTANT SAFETY INSTRUCTIONS

This document contains important instructions and warnings that must be observed when using the portable charger for electric vehicles from EV Expert s.r.o.

WARNING



Read this document before using the charger. Failure to follow the instructions or warnings described in this document may result in fire, electric shock, serious injury, or death.

- The portable charger contains an RCD-A-EV circuit breaker and therefore a residual current device is not necessary.
- The EVELINE MAX portable charger is only designed for charging electric vehicles that support the IEC 62196-1 and IEC 61851-1 standard. Do not use it for other purposes or with other vehicles or objects.
- The portable charger is only intended for vehicles that do not require ventilation during charging.
- Before connecting the charger to the socket, make sure that it is rated for an adequate current load and is not damaged.
- Do not use the charger if it is defective, corroded or otherwise damaged, or if it indicates a serious internal error.
- Do not touch the connectors with sharp metal objects such as wires, needles or other tools.
- Do not damage the charger with sharp objects or insert foreign objects into any part of the charger.
- Keep the charger out of the reach of children or mentally incapable people.
- When using and transporting the charger, handle it carefully to avoid damaging it. Do not subject it to strong shocks, tension, twisting, tangling or loads.
- Protect the charger, and especially its terminals, from moisture and water. Do not use it in heavy rain or snow.
- Make sure that the charging cable does not obstruct the movement of pedestrians, other vehicles or other objects.



The charger must not be exposed to direct sunlight!

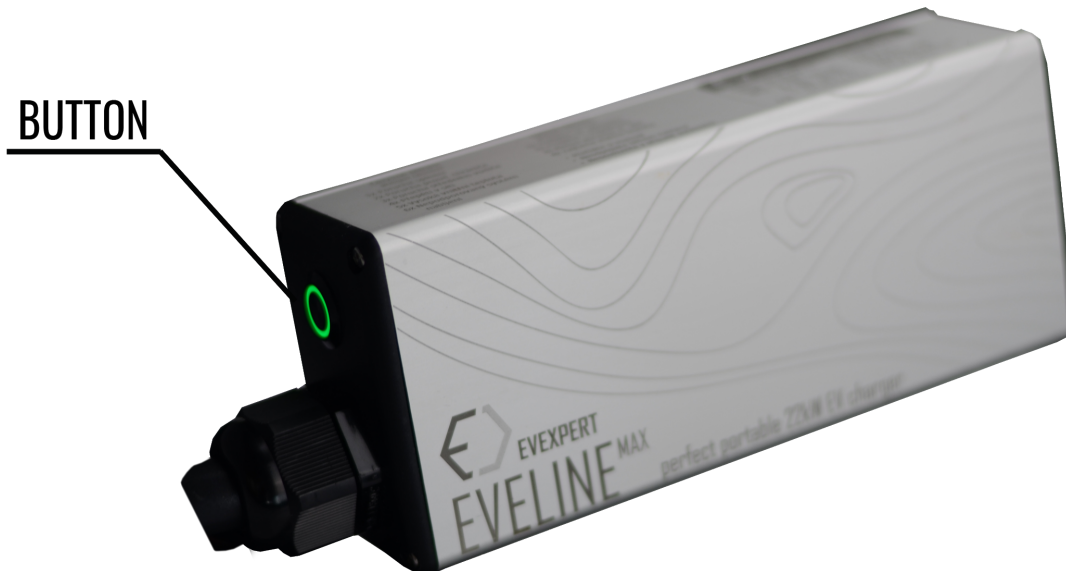
If a fault occurs, the user is not authorized to open, disassemble, repair or otherwise modify the device. If repair is required, contact EV Expert s.r.o. or your dealer.

If you have any questions or recommendations, contact us at: info@evexpert.cz

CHARGER COMPONENTS

The EVELINE MAX smart charger consists of:

- DUOSIDA charging cable 5 or 7 meters
- Type 2 connector or type 1 connector (for car connection)
- CEE industrial plug
- Charger body
 - Button



CONNECTING THE CHARGER

1. Connect the charger to the mains to an industrial CEE socket. Do not use extension cables!
2. During the initialization phase, the red LED indicates that the TN-S network is selected. Blue indicates that the IT network is selected.
3. If you need to change the selected network, press the button for 5 seconds during the initialization phase to select the second network.



The user is solely responsible for the correct choice of network.

4. After correct detection of the PE conductor and successful initialization, the flashing white LED signals the current setting of the maximum charging current.

1x	6A
2x	10A
3x	13A
4x	16A
5x	20A
6x	25A
7x	32A

5. Then the LED stays green and the charger is ready to charge.
6. Before connecting the electric car, it is possible to set the maximum charging current using the button. When pressed, it changes color to either red or blue (depending on the type of network selected). The number of presses determines the maximum charging current as in the initial signaling, ie one press corresponds to a limit of 6A, two presses 10A, three 13A, four 16A, five 20A, six 25A and seven 32A. The eighth press sets the limit back to 6A.
7. The number of presses is confirmed by the same number of flashes of the white LED.



If the supply is protected by less than 32A circuit breaker or there is a risk of concurrence with other appliances, set an adequate maximum charging current. Limiting the maximum charging current is important to prevent the circuit breaker from tripping. The charger remembers the last setting.

8. Connect the charger to the electric car.
9. Charging starts automatically.

END OF CHARGING AND DISCONNECTING THE CHARGER



NEVER disconnect the charger while charging!

1. First, stop charging on the side of the vehicle.
2. Unplug the charger from the grid.
3. If necessary, release the latch on the vehicle's charging port, and disconnect the charger from the vehicle.

STATUS SIGNALING

The charger can signal several statuses during, before, or after the charging process. In general, a green-lit LED means that everything is ok. An orange-lit LED means that charging is underway. And flashing LED means that there is a problem of some sort. The number of flashes depends on the type of problem.

Green/orange LED flashing – charging speed can be affected:

- 1x – problem with switching elements in the charger (rapid flashing)
- 2x – undervoltage or missing phases
- 3x – possible grid problems
- 4x – high temperature

Red LED flashing – charging will stop:

- 1x – problem with switching elements in the charger (rapid flashing)
- 2x – problem with the residual current device
- 3x – problem with the PE or neutral wire
- 4x – overvoltage
- 5x – very high temperature
- 6x – unsupported charging mode

All these statuses are also written on the device for easier identification of the problem.

PROBLEM-SOLVING

- If charging slows down or suddenly stops, check the onboard system in the vehicle and the display on the charger for an error condition. Then follow the reported error.
- If charging has stopped, it may help to disconnect the portable charger from the car and the CEE socket and reconnect it.
- If the problem is caused by the high temperature of the charger, stop charging until the charger cools down. Check that the charger is not exposed to direct sunlight, and if so, place it in the shade. If overheating occurs regularly, contact EV Expert s.r.o. or your dealer.

In case of persistent problems, contact EV Expert s.r.o. at: info@evexpert.cz

TECHNICAL SPECIFICATIONS

Rated charging current	1x32A or 3x32A* (22kW) – depending on the connector
Own consumption at rest	Less than 0,5W
Permissible ambient temperature	-40°C to +50°C
Degree of protection	Body and cable: IP65, plug-in terminals: IP44
Dimensions of the aluminum body	50 x 08 x 190mm (HxWxL)
Power supply terminal	CEE (red 5-pin for 32A)
Connector for electric vehicle	Type 1 or Type 2 in accordance with IEC 62196-2 to 32A
Phases used	1 or 3 depending on the vehicle
Manufactured in accordance with	IEC 62196, IEC 61851-1, CE, EMC, RoHS
Total length	5m or 7m
Compatible electrical network	TN-S, IT
RCDB (Integrated in the charger)	AC < 30mA / DC < 6mA

*The maximum current and charging time depend on the characteristics of the electric vehicle being charged. The charger may limit the charging current at high temperatures.

EU DECLARATION OF CONFORMITY

We

EV Expert s.r.o.
Polská 181 / 70
779 00, Olomouc
IČ: 056 99 711

We declare under our sole responsibility that the products:

Portable charging stations for electric vehicles
EVELINE MAX

Serial number: see nameplate
Year of first issue CE: 2018
Manufacturer: EV Expert s.r.o.

devices for charging electric vehicles by conductive connection, provided that they are correctly installed in accordance with the relevant standards in the country in which they are installed and are properly maintained and serviced and are also operated solely for the purpose for which they are manufactured,

covered by this declaration complies with the following relevant European Union harmonization legislation:

- Government Regulation No. 118/2016 Coll. (2014/35 / EU)
- Government Regulation No. 117/2006 Coll. (2014/30 / EU)
- Government Regulation No. 481/2012 Coll. (2011/65 / EU)

The following harmonized standards and technical specifications on the basis of which conformity is declared have been used in the assessment:

- ČSN EN 61851-1:2010
- ČSN EN 62196-2
- ČSN EN 61000-6-3 ed.2:2007 + A1:2011
- ČSN EN 61000-6-1 ed.2:2007
- ČSN EN 61000-3-2
- ČSN EN 61000-3-3

The product is safe under conditions of normal and intended use. We have taken all measures available to us to ensure that products placed on the market comply with the essential requirements of European Union law.

EVELINE MAX warranty conditions

1. EV Expert, s.r.o. (hereinafter "EV Expert") has developed a highly reliable device for charging electric vehicles, called EVELINE MAX, which is designed to withstand normal operating conditions when used in accordance with the operating manual (the "Manual") supplied by EV Expert.
2. The EV Expert Limited Warranty ("Limited Warranty") covers defects in workmanship and EVELINE MAX material ("Defective Product") for a period of two (2) years ("Warranty Period") from the date of original purchase of the Product.
3. The Limited Warranty does not apply and EV Expert assumes no responsibility for any defect or damage to any EVELINE MAX that has been:
 - a. misused, neglected, altered or otherwise damaged, either internally or externally,
 - b. improperly operated, manipulated or used, including use under conditions for which the product was not designed or used in an unsuitable environment or used in a manner inconsistent with EV Expert's installation and operating manual or applicable laws and regulations
 - c. exposed to fire, water, corrosion, biological attack or input voltage that creates operating conditions above the maximum or minimum limits specified in the EV Expert technical specifications, including high input voltage from generators or lightning strikes,
 - d. exposed to accidental or consequential damage caused by defects in other components of the electrical system,
 - e. if the original identification mark (including the trademark or serial number) of such EVELINE MAX has been contaminated, altered or removed.
4. The limited warranty does not cover costs associated with troubleshooting of the customer's electrical systems. The limited warranty does not exceed the original costs of EV Expert.
5. During the warranty period, EV Expert will, at its sole discretion, repair or replace a defective product free of charge, provided that EV Expert inspects the existence of a defect covered by the limited warranty.
6. EV Expert will use new and / or repaired parts at its discretion when repairing or replacing a defective product. EV Expert reserves the right to use parts or products of original or improved design when repairing or replacing a defective product.
7. If EV Expert repairs or replaces a defective product, the limited warranty will continue on the repaired or replacement product for the remainder of the original warranty period or ninety (90) days from the date of return of the repaired or replacement product by EV Expert, whichever is later.
8. The limited warranty covers only parts and labor required to repair a defective product.
9. The Limited Warranty covers the cost of shipping a repaired or replacement product from EV Expert through a carrier selected by EV Expert to locations within the European Union, but not to locations outside the European Union. The limited warranty does not cover damage during transport or damage caused by improper handling by the carrier. The carrier is responsible for such damages.

Procedure for applying the warranty conditions

1. To obtain repair or replacement under the limited warranty, the customer must follow a certified Return Merchandise Authorization process.
2. All defective products must be returned with a Return Merchandise Authorization Number (RMAN), which the customer must request from EV Expert.

The RMA request must contain the following information:

- i. Proof of purchase of a defective product
- ii. Defective product model number
- iii. Serial number of the defective product
- iv. Detailed description of the defect
- v. Shipping address for returning a repaired or replacement product.

3. Any defective product approved for return must be returned in the original shipping container or other packaging that adequately protects the product from damage during shipment.
4. The returned defective product may not be disassembled or modified without the prior written consent of EV Expert.

Additional provisions

1. The Limited Warranty is the only and exclusive warranty provided by EV Expert that is permitted by law. Its meaning takes precedence over all other warranties, express or implied, statutory or otherwise, including warranties of title, quality, merchantability, fitness for a particular purpose or warranties as to the accuracy, effectiveness or suitability of any technical or other information provided in manuals or other documentation.
2. In no event shall EV Expert be liable for any special, direct, indirect, incidental or consequential damages, losses, costs or expenses under contract, or restrictions on the commencement of any economic loss of any kind, any loss or damage to property, or any personal injury.
3. To the extent that warranties relating to EVELINE MAX are required under applicable law, such implied warranties will be limited in time to the Warranty Period to the extent permitted by applicable law. In states and provinces that do not allow the limitation or exclusion of implied warranties or for the duration of the implied warranty, or the limitation or exclusion of incidental or consequential damages, the above limitations or exclusions may not apply.
4. This Limited Warranty gives the customer specific legal rights. The customer may have other rights that vary from state to state or region to region.

Email contact address is info@evexpert.eu

Contact phone is +420 722 689 252



VAT ID: CZ05699711
Stupkova 18, 779 00 Olomouc
Czech Republic

For more information, visit our website: www.evexpert.eu or contact us at email: info@evexpert.eu